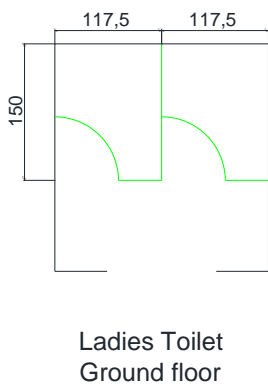
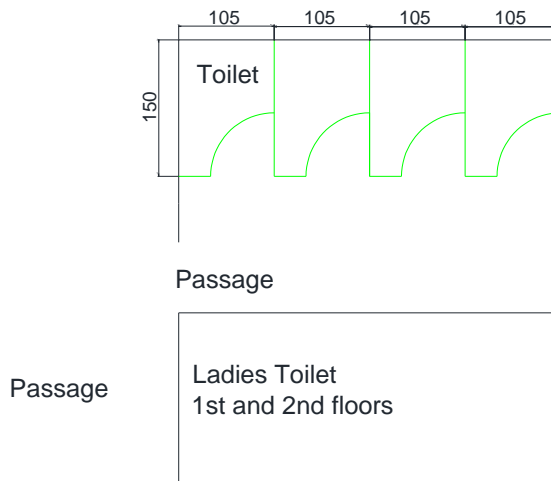


Construction of Head office building to CAPE at Muttathara – 2 - Providing partitions & cubicles to the toilet, using laminated sections

Drawing



Construction of Head office building to CAPE at Muttathara - 2 - Providing partitions & cubicles to the toilet, using laminated sections

Total number of cubicles: 14
No of partitions 1.30mx1.98m: 2
Partitions to gents urinal:6